

37.Christmas Worship

Arr.P.Schaban

♩=112

5 **A** 4 **B**

13 **C**

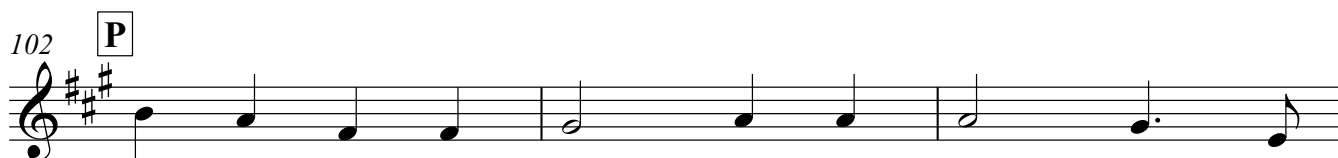
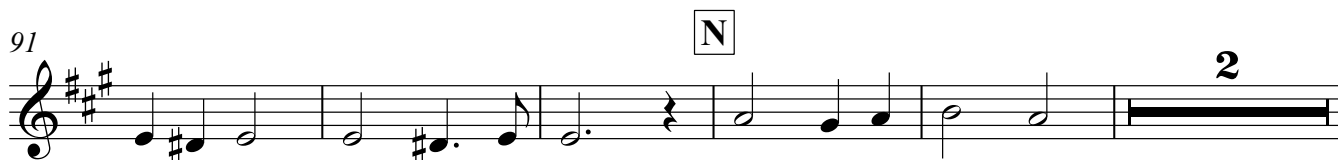
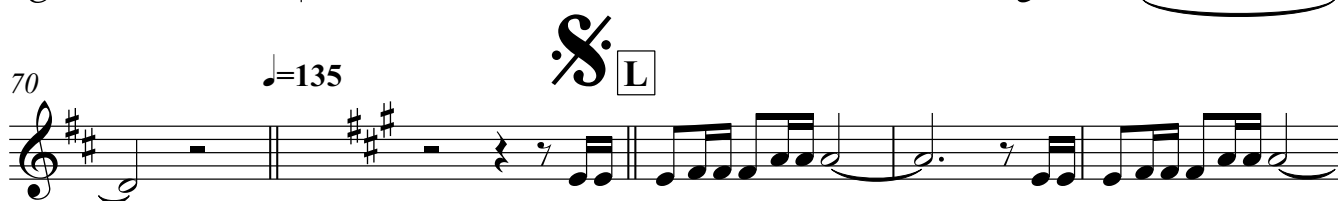
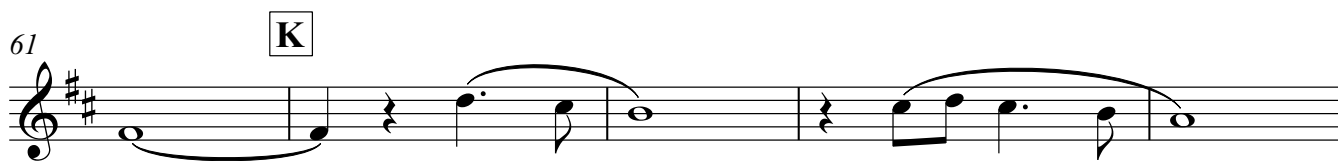
17 **D**

21 **E**

25 **F**

30 **G** ♩=104 **H** 7 9

47 **I** 7



Trompette 3 in B

³
D.S. al Fine

105

1. 2.

The musical notation is on a single staff. Measure 105 (labeled '1.') contains a first ending with a repeat sign. Measure 106 (labeled '2.') contains a second ending with a repeat sign. The notation includes eighth and quarter notes, rests, and a final double bar line.